

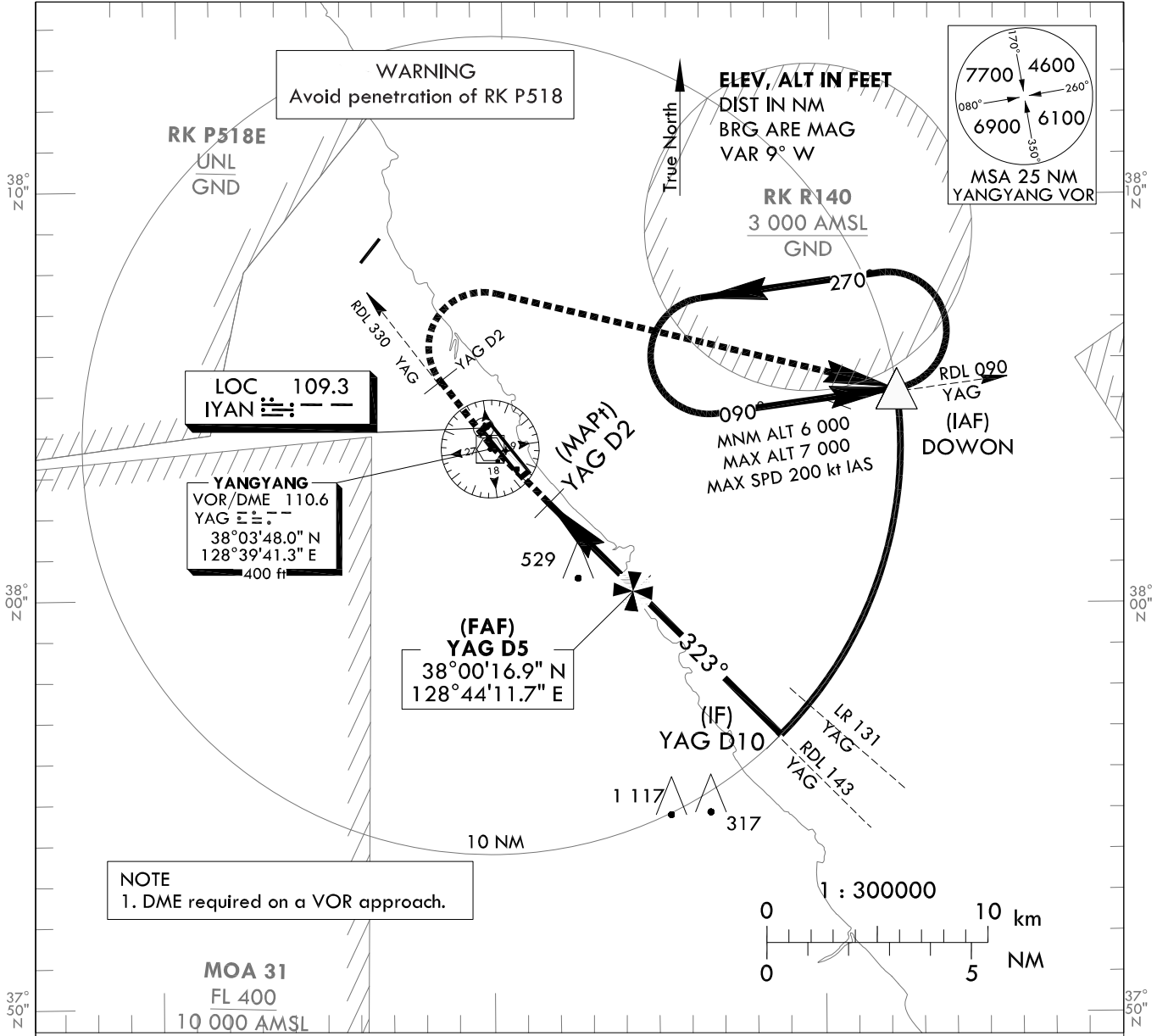
**INSTRUMENT
APPROACH
CHART - ICAO**

AERODROME ELEV 241 ft
HEIGHTS RELATED TO
THR RWY 33 - ELEV **227 ft**

GANGNEUNG APP 124.6
YANGYANG TWR 118.85
124.375

YANGYANG/Intl(RKNY)
VOR RWY 33

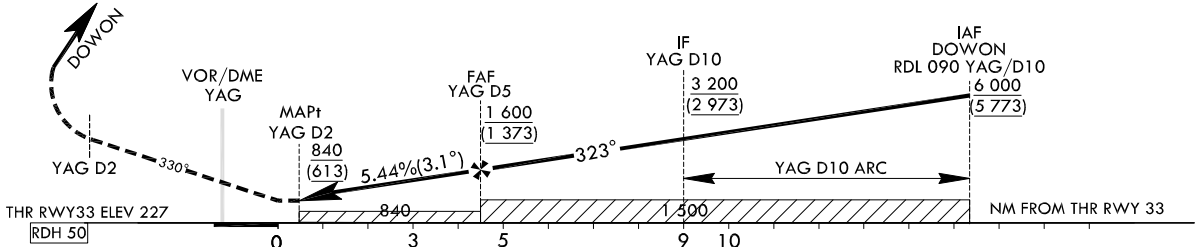
Note : Approach and circle-to-land under ICAO Flight Procedures.



RECOMMENDED PROFILE	DME YAG	5	4	3	2
Final Approach Gradient 5.44%, 330 ft/NM	ALT(HGT)	1 600 (1 373)	1 268 (1 043)	940 (713)	840 (613)

MISSED APPROACH
Climb on RDL 330 YAG until 2DME, then turn right to DOWON and hold at 6 000 ft. Hold as published.

TRANSITION ALT 14 000
TRANSITION LVL FL 140



CATEGORY	FULL	MDA(H)	A	B	C	D	Rate of descent	V/v fpm	60	90	120	150	180
			840 (613)	2 100 m					330	496	661	826	991
STA	ALS INOP	840 (613)	2 800 m				* Timing Not authorized for defining MAPt. * Circling Not authorized west of RWY 15-33, area on between RDL 150 and RDL 315 YAG and area beyond 6 DME of between RDL 315 and RDL 360 YAG.						
Circling			840(600) 2 700 m	840(600) 2 800 m	1 160(920) 4 300 m	1 180(940) 4 600 m							

YANGYANG/Intl(RKNY)

VOR RWY 33

AERONAUTICAL DATA TABULATION

VOR Approach to RWY 33 from DOWON		
	Fix/Point	Coordinates
	DOWON(IAF)	38°05'14.5"N 128°52'13.8"E
	10.0D YAG(IF) BRG 323.00° / 10.00 NM YAG	37°56'45.5"N 128°48'41.3"E
	5.0D YAG(FAF) BRG 323.00° / 5.00 NM YAG	38°00'16.9"N 128°44'11.7"E
	2.0D YAG(MAPt) BRG 323.00° / 2.00 NM YAG	38°02'23.5"N 128°41'29.9"E
	THR RWY33 Final Approach Descent Angle 3.11°	38°03'09.21"N 128°40'41.25"E
	YAG VOR/DME	38°03'48.0"N 128°39'41.3"E
	D2 YAG R 330 YAG/ 2.00 NM	38°05'22.3"N 128°38'07.6"E
	DOWON R 090 YAG/ 10.00 NM	38°05'14.5"N 128°52'13.8"E

Change : Information of coordinates.